

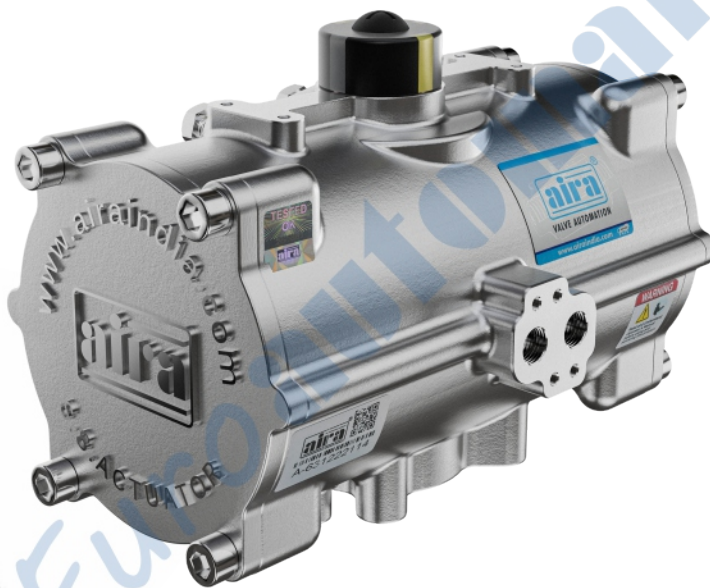
Your Solution Partner in
Industrial
Valve
Automation...



ISO 5211 Standard

STAINLESS STEEL

Double Acting Pneumatic Rotary Actuator



Introduced for the
1st time in India

Made in India
316 stainless steel
actuators and accessories



Mfg. & Mkt by :

airaEuroautomation pvt. ltd.
INDIA

www.airaindia.com



About Us

*Clients are
why we exist!*

We welcome and thank you for referring out detailed catalogue.

aira is know all over continents as a manufacturer of quality products - Ball Valves, Butterfly Valves, Plug Valves, & Control On / Off Valves with Pneumatic Actuators for Pharma, Oil & Gas, Steel, Paper, Water, Chemical and all type of processing industries.

aira has walked through more than 3 decades, gaining valuable experience, offering equipment's in the products manufactured by OEMs in all spheres of engineering. **aira** products have gained reputations of consultants, and approvals of users, OEMs and other as a quality product.

aira has expanding business into foreign markets specially GCC, UAE, Asian & African countries. This is because increase its customer base and revenue, leading to overall growth and success. Now foreign users come to know and believe in the services provided by the **aira**. Along with the same, it also helps to reach a large number of users thereby leading to the increase their business.

Being and ISO 9001 BVQI certified company has put **aira** in fore front. Out motto is "Value the customer" and "Superior product", one among the best in the world.

Our Quality

- In- House full scale testing facility.
- Lean manufacturing practices
- Certified by : ISO 9001 : 2015 (BVQI LONDON), CE, ATEX, CIMFR, BIS, PESO, SIL 3, IBR
- API 609, API 6D

Our Commitment

- To understand customer's need first before proposing our products.
- To keep on providing competitive rate's by adapting to continuous process improvement, without compromising on quality.
- To provide continuous support to our customers and go beyond their expectations in terms of delivery and after sale services.

Our Manufacturing Facility

- In house R & D, manufacturing and testing facility is all located in a spread over three campuses at Ahmedabad, Gujarat, INDIA.

Network - Sales Office

- 60 Plus Branch Offices in different states in India.
- Sales office in the Bangladesh, Dubai, Kenya, Malaysia, Nepal, Qatar, Singapore, South Africa, Sri Lanka, Turkey, USA (Expanding).

QMS (Quality Management System)

ISO 9001 : 2015

EMS (Environment Management System)

ISO 14001 : 2015

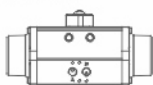
OHSAS (Occupational Health & Safety Management System)

ISO 45001 : 2018

IBR
PISTON VALVE
GLOBE CONTROL VALVE (CKD/CND)
DISC CHECK VALVE (DCV)
PRESSURE REDUCING VALVE (PRV)
POP TYPE SAFETY VALVE
BALL VALVE

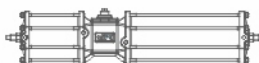
Pneumatic Actuator

CE /
ATEX /
EXIDA SIL-3 /
PROOF OF DESIGN



Scotch & Yoke Actuator

CE / ATEX / SIL-3



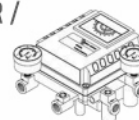
Stainless Steel Actuator

CE /
IEP ATEX



Positioner Enclosure

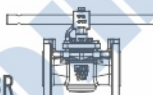
CE / CIMFR /
IP67 / BIS
/ PESO



aira's
SOME OF OUR
Certificates

Plug Valve

FUGITIVE EMISSIONS
TEST
AS PER ISO
15848-1 / IBR



Flameproof Solenoid Valve

IEP ATEX / CE / CIMFR
/ IP65/ IP67 / IP68 /
BIS / PESO



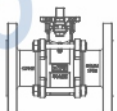
Limit Switch

IEP ATEX / CE / CIMFR
/ IP67 / BIS / PESO /
EQDC IP68



Ball Valve (Floating & Trunnion)

FIRE SAFE TEST DESIGN /
FUGITIVE EMISSIONS TEST
AS PER ISO 15848-1 / CE /
PED / EXIDA SIL-3



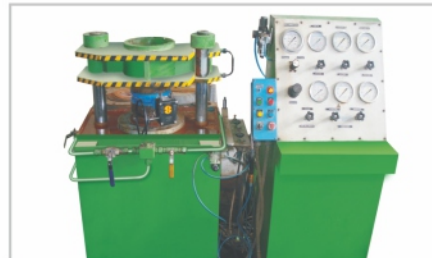
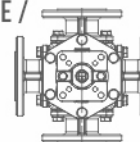
Butterfly Valve (centric / Double & Triple Eccentric)

FIRE SAFE TEST DESIGN /
FUGITIVE EMISSIONS TEST
AS PER ISO 15848-1 / CE /
PED / EXIDA SIL-3
/ IBR / PROOF OF DESIGN /
FOOD GRADE / BIS / ISI



Multiport Ball Valve

FUGITIVE EMISSIONS TEST
AS PER ISO 15848-1 / CE /
PED / EIL



For Example

A
MODEL DOT

B

Double Acting	Single Acting
45D	45S
65D	65S
85D	85S
125D	125S
165D	165S
215D	215S
315D	315S

C

Rotation	Code #2
90° Counter Clockwise	*
90° Clockwise	CW

D

Body Protection	Code
Electro Polished	*
Special Coating	@

E

Seals	Code
NBR	*
Viton	AV

F

Body & Pinion Material	Code
CF8M (SS 316)	*
Cf8 (SS 304)	8

Note	
Symbol	Indication
@	Contact Factory.
*	By Default, Donot Mention
#2	Available Only Single Acting Model.

Example - 1	DOT 165D8	DOT Model 165 Double Acting Actuator SS 304 Body
Example - 2	DOT 125S	DOT Model 125 Single Acting Actuator
Example - 3	DOT 85SCW8	DOT Model 85 Single Acting Actuator 90° Clockwise Rotation SS 304 Body

Design & Features

"aira" DOT Series pneumatic actuators are 100% stainless steel rack & pinion pneumatic actuators. Based on latest CNC machining centers & mechanical manufacturing are technology, and nearly 20 years know-how of the rack & pinion technology, this actuators we manufactured is a high grade product with the characteristics of reliability, high performance, long cycle life and already proved to be used in most corrosive chemicals as well as very harsh industrial atmospheres.



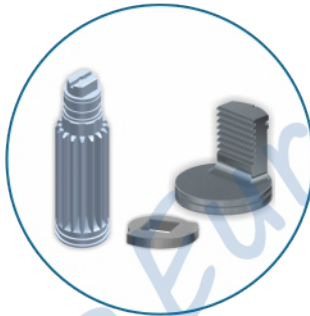
Excellent corrosion resistance.

All main parts of DOT series actuator and its accessories are made from stainless steel. The body and end-caps is made by investment casting stainless steel. The CF8 (304) and CF8M (316) are available for choice. The pinion and fastening are made by 304 or 316 on requiring. Nearly 20 years experience of application proved that this kind of stainless steel pneumatic is able to offer excellent resistance to most corrosive chemicals (such as acid, alkali) as well as corrosive industry atmospheres, such as offshore, oil and gas platform, pharmaceutical and food industry.



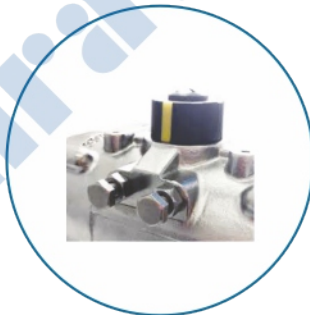
Wide scope of output torque.

Totally, we have 6 different size (specifications) actuators for choice. The output torque range is from 15Nm to 3815Nm at 5 Bar. The DOT-300 stainless steel actuator with 3815Nm is biggest one in the World now.



Smooth and long life operation .

High level manufacturing technology for the rack & pinion in our workshop allows this actuator not only to cycle more than 500,000 times free from failure but also to offer exceptionally smooth actuation due to the low friction generated during rotational operations.



Flexible adjustment in travel ends.

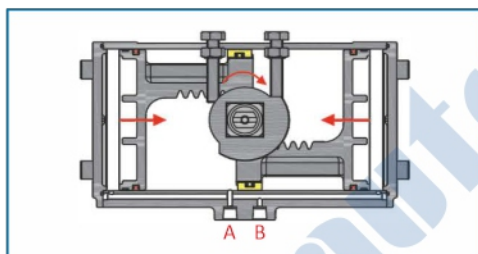
The two independent external travel stop bolts allow $\pm 5^\circ$ adjustment at 0° and 90° of the quarter travel.

Design & Features

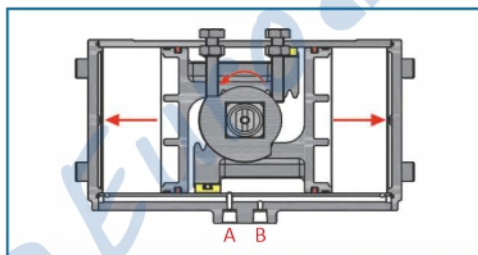
Namur and ISO 5211 Mount. "DOT" series Stainless Steel Pneumatic Actuators are designed to incorporate Namur mounting for solenoids, limit switches and positioners and offer a ISO5211 combination mounting pads that allow you to mount directly to quarter turn valves.



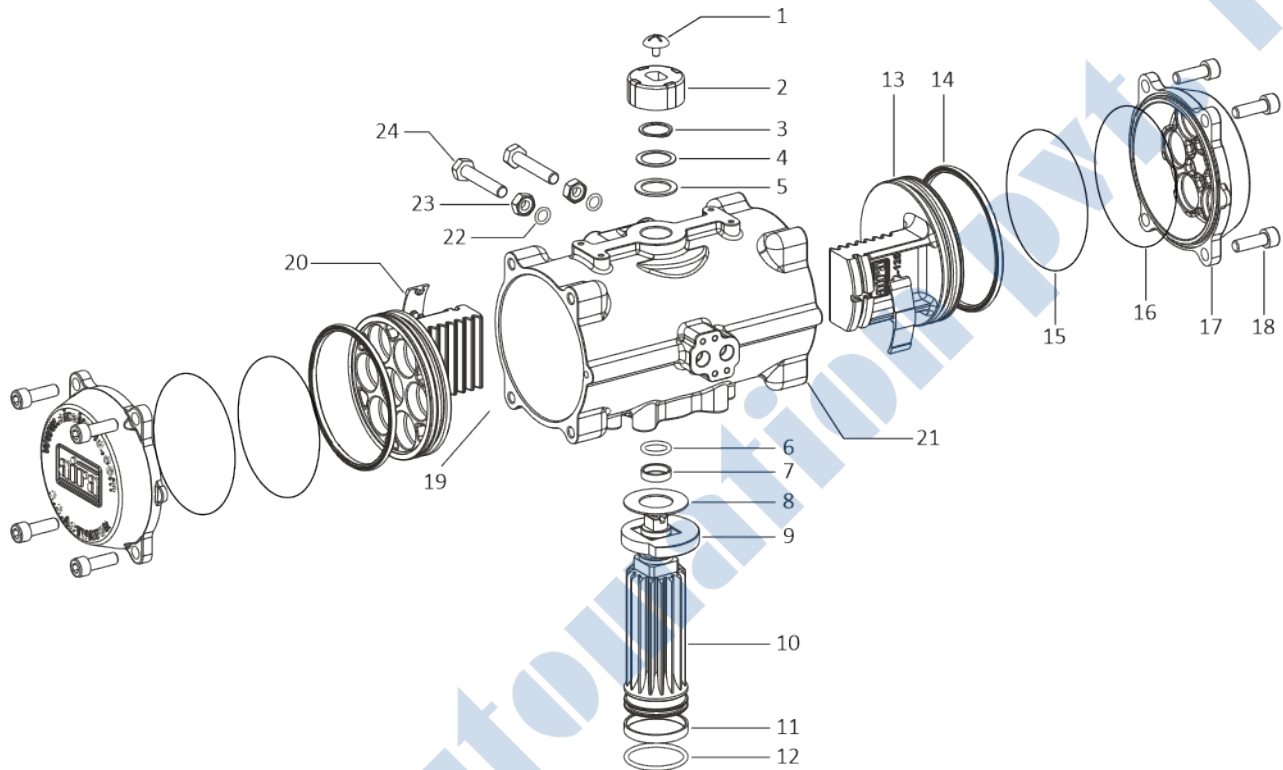
Double Acting (*Stay Put*)



By supplying air to Port B, pressure is applied to the outside chamber and drives the dual pistons inward. The action causes the pinion to turn clockwise while the air is being exhausted from Port A.

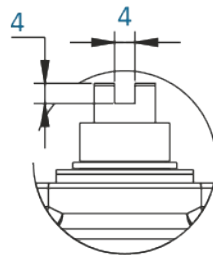
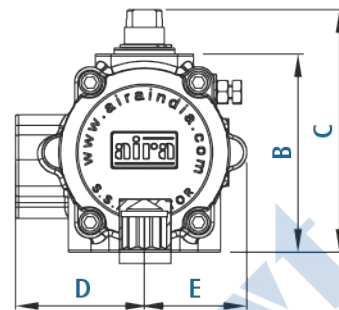
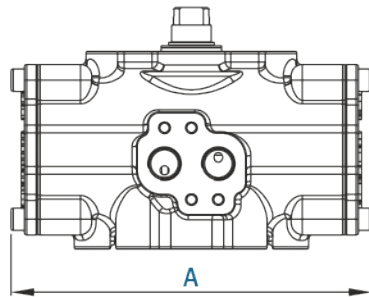


By supplying air to Port A, pressure is applied to the centre chamber and forces the dual pistons outward. Linear piston force is transferred via gear racks to the pinion gear, causing the pinion to turn counterclockwise while the air is being exhausted from Port B.

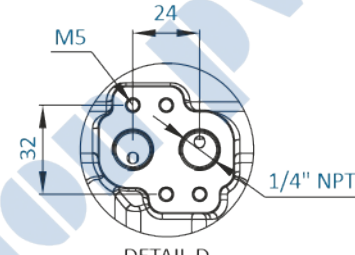


No.	Description	Material	Qty.	No.	Description	Material	Qty.
1	Indicator Screw	Nylon + S.S	1	15	Bearing (Piston Guide)	Nylon / Delrin	2
2	Indicator	Nylon	1	16	End Cover for 'O' - Ring	Hi - Nitrile	2
3	Circlip Shaft	ASTM A276 Type 316	1	17	End Cover	ASTM A351M Gr. CF8M	2
4	Shaft Washer	ASTM A276 Type 316	1	18	Fitting L. N. Bolt	ASTM A193 Gr. 8M	8
5	Shaft Washer	Delrin	1	19	Bush for Air Bolt	NBR / L NBR / Viton	2
6	Shaft Up 'O' - Ring	Hi - Nitrile	1	20	Scate Piston	Nylon / Delrin	2
7	Shaft Up Guide	Delrin	1	21	Body	ASTM A351M Gr. CF8M	1
8	Adapter Washer	Delrin	1	22	'O' Ring for Adjustable Bolt	Hi - Nitrile	2
9	Adaptor	S.S 316	1	23	Nut (Adjustable Screw)	Stainless Steel	2
10	Shaft	ASTM A276 Type 316	1	24	Adjustable Screw	ASTM A193 Gr. 8M	2
11	Shaft Low Guide	Delrin	1				
12	Shaft Low 'O' - Ring	Hi - Nitrile	1				
13	Piston	ASTM A351M Gr. CF8M	2				
14	'O' - Ring (Piston 2D Seal)	Hi - Nitrile	2				

Pneumatic Rotary Actuator Stainless Steel As Per ISO 5211



DETAIL C



DETAIL D

Unit : mm

Model	A Double Acting	B	C	D	E	F	G	M	N	O	Air Connection Port
DOT - 45	129	65	82	48	35	80	30	M6X50	M5X36	11X11	G1/4" - NPT
DOT - 65	161	88	108	57	46	80	30	M8X70	M6X50	14X14	G1/4" - NPT
DOT - 85	180	111	130	69	58	80	30	M8X70	M6X50	17X17	G1/4" - NPT
DOT - 125	266	155	175	88	77	130	30	M10X102	M8X70	27X27	G1/4" - NPT
DOT - 165	377	200	227	110	97	130	30	M12X125	M10X102	27X27	G1/4" - NPT
DOT - 215	554	254	283	143	134	130	30	M16X140	----	46X46	G1/4" - NPT
DOT - 315	620	354	375	195	180	130	30	M20X165	----	46X46	G1/4" - NPT

Double Acting Actuators Output High Torque (Nm)

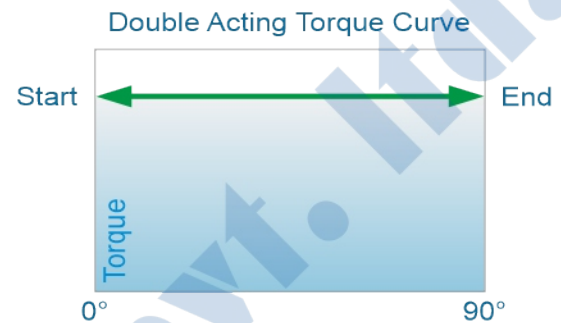
Unit : mm

Model	DOT - 45	DOT - 65	DOT - 85	DOT - 125	DOT - 165	DOT - 215	DOT - 315
High Torque.	59	69	89	129	169	219	319

Output Torque (Nm)

Double Acting Actuators Output Torque (Nm)

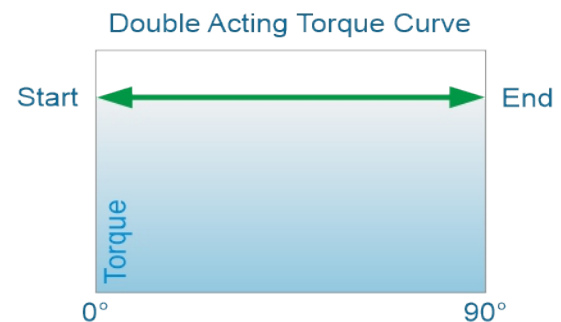
Model	2.0	3.0	4.0	5.0	6.0	7.0	8.0
DOT - 45DA	6.0	9.1	12.1	15.1	18.1	21.1	24.1
DOT - 65DA	14.6	21.9	29.2	36.5	43.8	51.1	58.4
DOT - 85DA	31.4	47.0	62.7	78.4	94.1	109.7	125.4
DOT - 125DA	100.3	150.5	200.6	250.8	301.0	351.1	401.3
DOT - 165DA	266.0	399.0	532.0	665.0	798.0	931.0	1064.0
DOT - 215DA	532.0	798.0	1064.0	1330.0	1596.0	1862.0	2128.0
DOT - 315DA	1526.0	2671.0	3052.0	3815.0	4578.0	5341.0	6104.0



Output Torque (in.lbs)

Double Acting Actuators Air Pressure (Psi)

Model	30	45	60	75	90	105	120
DOT - 45DA	54.9	83.3	110.8	138.2	165.7	193.2	220.6
DOT - 65DA	133.7	200.5	267.3	334.2	401.0	467.8	534.7
DOT - 85DA	287.5	430.3	574.0	717.8	861.5	1004.3	1148.1
DOT - 125DA	918.3	1377.9	1836.5	2296.1	2755.7	3214.4	3674.0
DOT - 165DA	2435.3	3652.9	4870.6	6088.2	7305.8	8523.5	9741.1
DOT - 215DA	4870.6	7305.8	9741.1	12176.4	14611.7	17046.9	19482.2
DOT - 315DA	13970.8	24453.5	27941.6	34927.0	41912.4	48897.8	55883.2



Technical Data

Weight

Unit: Kg

Model	45	65	85	125	165	215	315
DA	1.8	3.79	6.5	13.5	28	71.5	170.5

Air Consumption

Unit: L

Model Action	45	65	85	125	165	215	315
OPEN	0.08	0.21	0.43	1.60	3.70	7.50	23.8
CLOSED	0.11	0.23	0.47	1.40	3.20	7.50	29.7

Air consumption depends on Air Supply. Air volume and Action cycle times, the calculating as follows:

$$L/Min = \text{Air volume (Air volume Opening + Air volume closing)} \times \left[\frac{\text{Air Supply (Kpa)} + 101.3}{101.3} \right] \times \text{Action cycle times (/min)}$$

Operating Time

Double Acting		
Size	0°-90°	90°-0°
45DA	0.55	0.47
65DA	0.66	0.58
85DA	0.83	0.73
125DA	2.4	1.79
165DA	3.93	2.6
215DA	5.5	4.35
315DA	15	14.9

Operating Conditions

- Operating Media :**
Dry and Lubricated air, or non-corrosive gas.
The maximum particle diameter must be less than 40Pm.
- Air Supply Pressure :**
The minimum supply pressure is 2 Bar (30 psi).
The maximum supply pressure is 8 Bar (120 psi).
- Operating Temperature :**
Standard (NBR O - ring) : -20°C ~ 80 °C
(-4 °F ~ 175 °F)
Low Temperature (L NBR O-ring) : -35 °C ~ 80 °C
(-30 °F ~ 175 °F)
High Temperature (Viton O-ring) : -15 °C ~ 150 °C
(5 °F ~ 300 °F)
- Travel Adjustment :**
Have adjustment range of $\pm 5^\circ$ for the rotation at 0° and 90°.
- Lubricated :**
Under normal operating condition, need not accrete lubricant.
- Application :**
Either indoor or outdoor.
- Highest pressure :**
The maximum input pressure is 8 Bar (116 Psi).

Pneumatic Rotary Actuator Accessories

Pneumatic - Pneumatic & Electro Pneumatic ROTARY Valve Positioner



Electro - Pneumatic

Model
AEP-1000-R

Input Signal : 4 ~ 20 mA DC
Supply Air Pressure : 20 ~ 100 psi Max.
(7.0 Kg/cm²)
Standard Stroke : 10 ~ 80 mm
Air Pipe Connection : 1/4" NPT
Ambient Temperature : -20 °C to 70 °C
Degree of Protection : IP 65
Out-put Characteristics : Rotary
Conduit Connection : 1/2" NPT
Body Material : Aluminium Die Cast



Pneumatic - Pneumatic

Model
APP-1200-RDN

Pneumatic - Pneumatic & Electro Pneumatic LINEAR Valve Positioner



Electro - Pneumatic

Model
AEP-1000-LSN

Input Signal : 3 ~ 15 (0.2 ~ 1.0 Kg/cm²)
Supply Air Pressure : 100 psi Max.
(7.0 Kg/cm²)
Standard Stroke : 10 ~ 80 mm
Air Pipe Connection : 1/4" NPT
Ambient Temperature : -20 °C to 70 °C
Degree of Protection : IP 65
Out-put Characteristics : Linear
Conduit Connection : 1/2" NPT
Body Material : Aluminium Die Cast



Pneumatic - Pneumatic

Model
APP-1200-LSN

SMART Positioner LINEAR



Model

Body

Set Point Signal

Ambient Temperature

Supply Pressure

Flow

IP 6000 Series
Aluminium
4 - 20mA DC
Normal Version : -20 °C ~ 70 °C
Optional Version : -40 °C ~ 70 °C
0.14 - 0.7 MPa
55L/min (Sup=0.14MPa)



Weatherproof MICRO Limit Switch Box



Model

MMLS-BX-WP-01-A

MMLS-BX-WP-01-B

MMLS-BX-WP-01-C

Switch : Honeywell ZM / NJ2-V3-N /

NBB-V3-Z4

Type : 1 NO + 1 NC / 2 Switch

Enclosure Protection : IP 67

Ambient Temperature : -20 °C to 80 °C

Conduit Entry : 1/2" - NPT

Terminal : 8 Point

Mounting Bracket : Namur VDI / VDE3845 / ISO 5211

Material : Aluminium Die Cast



Flameproof Limit Switch Box



Model

MLS-BX-FLP-01-A

MLS-BX-FLP-01-B

MLS-BX-FLP-01-C

MLS-BX-FLP-01-D

Switch : Honeywell V15 / Honeywell

V 15 PCB Type / NCB2-V3-NO /

NJ2-V3-N / NBB-V3-Z4 / NBB3-V3-Z4

Type : 1 NO + 1 NC / 2 NO + 2 NC / 2 Switch

Enclosure Protection : IP 68

Ambient Temp. : -20 °C to 80 °C

Conduit Entry : 1/2" - NPT

Terminal : 8 Point

Mounting Bracket : Namur VDI / VDE3845 / ISO 5211

Material : Aluminium Die Cast



Flameproof Limit Switch Box STAINLESS STEEL 304 / 316



Model

LS4-BX-FLP-01-A / LS6-BX-FLP-01-A

LS4-BX-FLP-01-B / LS6-BX-FLP-01-B

LS4-BX-FLP-01-C / LS6-BX-FLP-01-C

LS4-BX-FLP-01-D / LS6-BX-FLP-01-D

Switch : Honeywell V15 / Honeywell

V 15 PCB Type / NCB2-V3-NO /

NJ2-V3-N / NBB-V3-Z4 / NBB3-V3-Z4

Type : 1 NO + 1 NC / 2 NO + 2 NC / 2 Switch

Enclosure Protection : IP 67

Ambient Temp. : -20 °C to 80 °C

Conduit Entry : 1/2" - NPT

Terminal : 8 Point

Mounting Bracket : Namur VDI / VDE3845 / ISO 5211

Material : ASTM A351 Gr. CF8 / CF8M / CF3M



Weatherproof Limit Switch Box (Big Box)



Model

MLS-BX-01-A / MLS-BX-01-B

MLS-BX-01-C / MLS-BX-01-D

Switch : Honeywell V 15 / NJ2-V3-N /

NBB-V3-Z4 / NCB2-V3-NO

Type : 1 NO + 1 NC / 2 NO + 2 NC /

2 Switch

Enclosure Protection : IP 67

Ambient Temperature : -20 °C to 80 °C

Conduit Entry : 1/2" - NPT

Terminal : 8 Point

Mounting Bracket : Namur VDI / VDE3845 /

ISO 5211

Material : Aluminium Die Cast



Weatherproof Limit Switch Box STAINLESS STEEL 304 / 316



Model

MLS4-BX-01-A / MLS4-BX-01-B

MLS4-BX-01-C / MLS4-BX-01-D

Switch : Honeywell V 15 / NJ2-V3-N /

NBB-V3-Z4 / NCB2-V3-NO

Type : 1 NO + 1 NC / 2 NO + 2 NC /

2 Switch

Enclosure Protection : IP 67

Ambient Temperature : -20 °C to 80 °C

Conduit Entry : 1/2" - NPT

Terminal : 8 Point

Mounting Bracket : Namur VDI / VDE3845 /

ISO 5211

Material : ASTM A351 Gr. CF8 / CF8M / CF3M



Pneumatic Rotary Actuator Accessories

3/2 Way Namur Direct Acting Solenoid Valve



Model	: NAM-SA-32
Coil Voltage	: All Std. Voltage Available
Frequency	: 50 - 60 Hz
Connection Type	: 1/4" (NPT)
Conduit	: PF 1/2"
Coil Insulation Grade	: Class "F"
Ambient Temp.	: -20 °C ~ 70 °C
MOC	: Aluminium
Seals	: NBR (Viton On Request)
Working Pressure	: Upto 0 to 10 Kg/cm ²

5/2 Way Convertible Poppet Type SINGLE & DOUBLE Namur Solenoid Valve



Model	: OTX-ALU-52 / 2OTX-ALU-52
Coil Voltage	: All Std. Voltage Available
Frequency	: 50 - 60 Hz
Connection Type	: 1/4" (NPT)
Conduit	: PF 1/2"
Coil Insulation Grade	: Class "F"
Ambient Temp.	: -20 °C ~ 70 °C
MOC	: Aluminium
Seals	: NBR (Viton On Request)
Working Pressure	: Upto 2.5 to 10 Kg/cm ²

3/2 Way Internal Pilot Operated STAINLESS STEEL 316 Single Namur Solenoid Valve



Model	: MPT-S6-32
Coil Voltage	: All Std. Voltage Available
Frequency	: 50 - 60 Hz
Connection Type	: 1/4" (NPT)
Conduit	: PF 1/2"
Coil Insulation Grade	: Class "F" & "H"
Ambient Temp.	: -20 °C ~ 70 °C
MOC	: ASTM A351 Gr. CF8M
Seals	: NBR (Viton On Request)
Working Pressure	: Upto 2.5 to 10 Kg/cm ²

5/2 Way Poppet Type STAINLESS STEEL 316 Single Namur Solenoid Valve



Model	: OTX-S6-52
Coil Voltage	: All Std. Voltage Available
Frequency	: 50 - 60 Hz
Connection Type	: 1/4" (NPT)
Conduit	: PF 1/2"
Coil Insulation Grade	: Class "F" & "H"
Ambient Temp.	: -20 °C ~ 70 °C
MOC	: ASTM A351 Gr. CF8M
Seals	: NBR (Viton On Request)
Working Pressure	: Upto 2.5 to 10 Kg/cm ²

3/2 Way Midget Type Direct Acting Solenoid Valve



Model	: DMV
Size	: 1/4"
Body	: CF8 / CF8M / Brass / S.S 304
Orific	: 2
Pressure	: 7 Kg / cm ²
Temp.	: Upto -5 to 80 °C max.
Coil Rating	: Continuous Rated
Coil Insulation	: "F" Class & "H" Class For Flameproof
Media	: Air & Gas
Voltage	: 12V, 24V, 48V, 110V, 230V, AC/DC

3/2 Way Midget Type Direct Acting Solenoid Valve



Model	: MDV
Size	: 1/4"
Body	: CF8 / CF8M / Brass / S.S 304
Orific	: 2
Pressure	: 7 Kg / cm ²
Temp.	: Upto -5 to 80 °C max.
Coil Rating	: Continuous Rated
Coil Insulation	: "F" Class & "H" Class For Flameproof
Media	: Air & Gas
Voltage	: 12V, 24V, 48V, 110V, 230V, AC/DC

Filter + Regulator Air Combination



Model	: 4FQ / 8 FQ / FRJ / AFRS4
Air Connection	: 1/4"
Max. Supply Pressure	: 4FQ : 0.5 to 4 Kg / cm ² 8FQ : 0.5 to 8 Kg / cm ² FRJ : 1 to 9 Kg / cm ²
Gauge Connection	: 1/8"
Ambient Temp.	: -20 °C ~ 70 °C
Mini Filtering Size	: 5 Micron
Material	: Aluminium Pressure Die Cast / CF8 / CF8M

Air Volume Booster



Model	: VLB
Size	: 1/4" to 1"
MOC	: Aluminium
Seals	: NBR
Supply Pressure	: 10 Bar
Output Pressure	: 7 Bar
Temperature	: -20 °C ~ 70 °C

Single & Double Air Lock Valve



Model Single	: SALV
Model Double	: DALV
Size	: 1/4" to 3/4"
MOC	: Aluminium
Seals	: NBR
Supply Pressure	: 10 Bar
Output Pressure	: 7 Bar
Temperature	: -20 °C ~ 70 °C

Manual Override Clutch Type (MO)



Model	: AMO
Torque	: 200 Nm to 10000 Nm
Body	: Aluminium Pressure Die Cast / S. G. Iron
Lever Wheel	: Stainless Steel
Hand Wheel	: S.S. / M.S. (Fabricated)



*time tested designs with
superior performance*

GLOBAL

Network



▲ International Dealers

AUSTRALIA	MALAYSIA	VIETNAM
BAHRAIN	MEXICO	NIGERIA
BANGLADESH	NEPAL	YEMEN
BHUTAN	OMAN	ZIMBABWE
BRAZIL	PARAGUAY	
CHILE	PERU	
COLOMBIA	PHILIPPINES	
ECUADOR	QATAR	
EGYPT	RUSSIA	
FUJI	SINGAPORE	
INDONESIA	SOUTH AFRICA	
IRAN	SRI LANKA	
IRAQ	TAIWAN	
IRELAND	TANZANIA	
ITALY	TURKEY	
JORDAN	UAE	
KAZAKHISTAN	UGANDA	
KENYA	UK	
KSA	USA	
MALAWI	UZBEKISTAN	



industrial valve automation

Network

Head Office & Works
AHMEDABAD

● Branch Office & Showroom

AHMEDABAD	KIM (ANKLISHWAR)
ANAND	KOLHAPUR (MAHARASHTRA)
ANDHERI	KOLKATA
ANKLISHWAR	MAHJUSAR (BARODA)
ASSAM	MEHSANA
AURANGABAD	MUMBAI
BAKROL	MUNDRA
BANGLORE	MORBI
BARODA	MUZAFFARNAGAR
BALANAGAR (HYDERABAD)	NAGPUR
BHARUCH	NOIDA
BHOPAL	PALANPUR
BHIWANDI (MAHARASHTRA)	PANIPAT
BOISAR	PANJAGUTA (HYDERABAD)
CHANGODAR	PITHAMPUR (MADHYA PRADESH)
CHENNAI	PUNE
CHHATRAL	PASHAMELARAM (HYDERABAD)
CHIPLUN (MAHARASHTRA)	RAJKOT
COIMBATORE	RAJASTHAN
DAHEJ	RAKHIAL (AHMEDABAD)
DELHI	RANICANJ (HYDERABAD)
FARIDABAD	SANAND
GANDHIDHAM	SECUNDERABAD
GHAZIABAD	SILVASSA (MAHARASHTRA)
GUWAHATI	SURAT
GWALIOR	TARAPUR
HYDERABAD	TRAJAPUR (RAJKOT)
HUBLI (KARNATAKA)	VIJAYWADA (ANDHRA PRADESH)
INDORE	UMARGAON (VAPI)
ICHALKARANJ (MAHARASHTRA)	VAPI
JAIPUR	VASAI
JODHPUR	VATVA
JHARKHAND	VIDHYANAGAR (ANAND)
KANPUR	VISHAKHAPATNAM (ANDHRA PR.)
KAKINADA (ANDHRA PRADESH)	WAGHODIYA (BARODA)

● Dealers & Distributors

AMRITSAR	KOLKATA
BALOTA	LUCKNOW
BANGLORE	LUDHIANA
BELGAUM	MARWAR
BHILWARA	MEERUT
CHANDICARH	MUZAFFARNAGAR
CHENNAI	NAGPUR
COCHIN	NOIDA
COIMBATORE	PANIPAT
DELHI	PEENYA
ERODE	PUNE
FARIDABAD	TRIPUR
GHAZIABAD	VARANASI
GOA	VISAKHAPATNAM
INDORE	WADI
JALANDHAR	KANPUR
JAMSHEDPUR	KOLHAPUR
JHARKHAND	

www.airaindia.com



Mfg. & Mkt by
aira Euroautomation pvt. ltd.
INDIA

Available At :



www.airaindia.com